



RDI
TECHNOLOGIES

SEEING IS
BELIEVING

The world's first non-contact Motion Amplification® software platform.

SOFTWARE VERSION 3.2 RELEASE

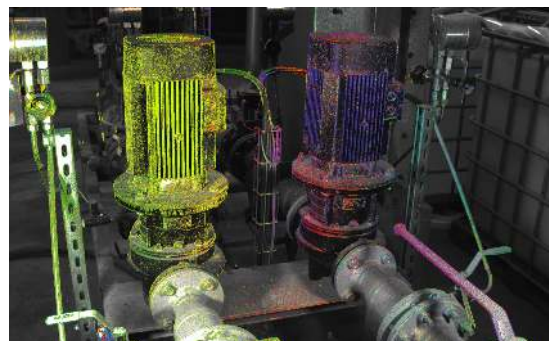
Iris M™ is a cutting edge, innovative product that is constantly under development to incorporate new features and functionality. With each release RDI Technologies focuses on added use cases and user interface with valuable feedback from our customers in the field.

Key Features Recently Added

Best-in-Class Digital Image Stabilization: Cutting edge image stabilization techniques have been developed and implemented to address environmental challenges such as flexible floors or mounting surfaces. Applying this post-processing technique will further enhance the stability and clarity of mp4's.

Phase Overlay: With the newest version of Motion Amplification® analysis software you can now graphically display relative phase throughout the image for a specified frequency. Similar to Motion Map (available in 3.0), the new Phase Map feature allows the user to visualize relative phase as different colors across the entire image and easily see elements that are out of phase as opposite colors. This gives the user quick access to approximate phase relationships without the use of ROI's.

Audio Enabled Video Editing: Narration and background music can be added to Motion Studio Projects, enhancing users' ability to tell the story and report findings within the exported mp4.



Phase Overlay

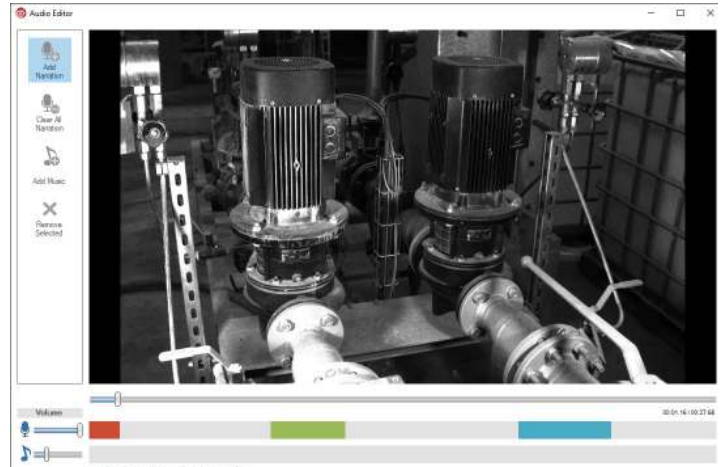
Difference Plots: Allows users to determine relative motion between multiple ROIs. An ROI (Region of Interest) reflects the X/Y motion of the object within the ROI; when two ROI's are created, the relative motion between the two can be immediately reflected with Difference ROI plots.

Metrology (Ruler - Distance & Angle): Users can now overlay distances and angles onto videos. Both of these are available in the form of Annotations (Ruler / Protractor) – which allow the user to document this information onto the recording itself, and thus within the mp4 of the recording.

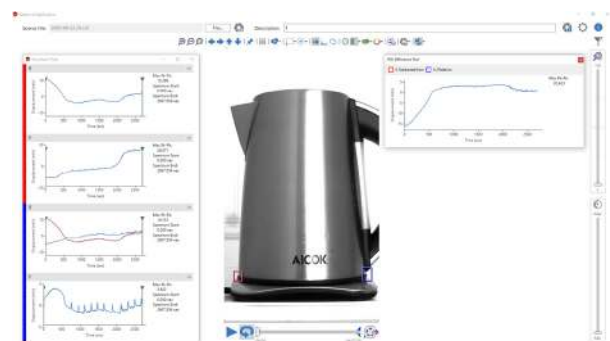
Velocity units in transient detail plots : Velocity is now supported in addition to displacement in transient detail plots. Velocity of that object throughout its travel can also be an important parameter, especially in the Test & Measurement industry. When displaying the Transient Path Plot, users now have the option to reflect that measurement in Displacement or Velocity.

Additional Features:

- Rotation and Crop Supported in Motion Amplification®
- Company Logo Annotation Overlaid on Video
- Motion map peak hold & intelligent peak finding includes additional ways to help users find frequencies of interest for Motion and Phase Maps
- Gif Export
- Smoothing filter in Motion Amplification –Smooths sudden disturbances, such as dramatic light changes, from recordings; most applicable to Long Term Recordings taken at low frame rates over extended periods of time.
- Motion Explorer displays recording and other file sizes – Useability enhancement to help users manage file sizes and allows user to sort files within Motion Explorer by file size.
- Exported .csv files are added to Motion Explorer hierarchy – When vibration data is exported to .csv format, references to these files are available in Motion Explorer, allowing quick access to file location or to launch files in Excel.



Audio Editor



Difference Plots