



# JPS Reliability

A Reliable Plant is a Profitable Plant

**PROfessional services for PROactive maintenance**

[info@jpsreliability.com](mailto:info@jpsreliability.com) <https://jpsreliability.com>





## SENSOTEQ KAPPA X TRIAL

- Technical management JPS Reliability Ltd
- **Kappa X Wireless Sensor** (Developed by Sensoteq and RMS)



# Other Software options

---

# Alarm Score

Asset health overall metrics – Score out of 100 based on type, site, machine or measurement point.

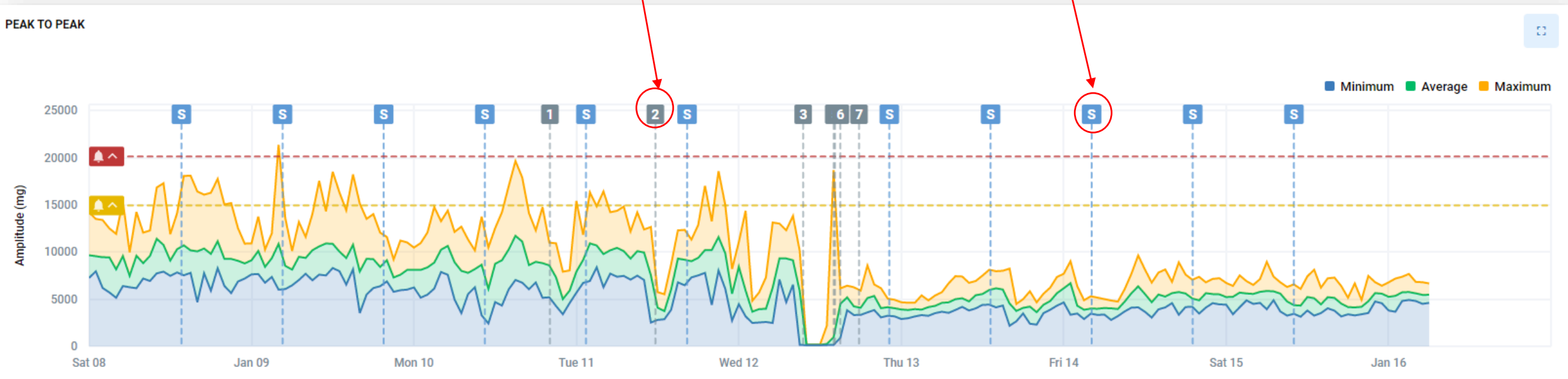


# Overall Timelines

Three critical parameters, Velocity RMS, Acceleration RMS and Acceleration Pk-Pk

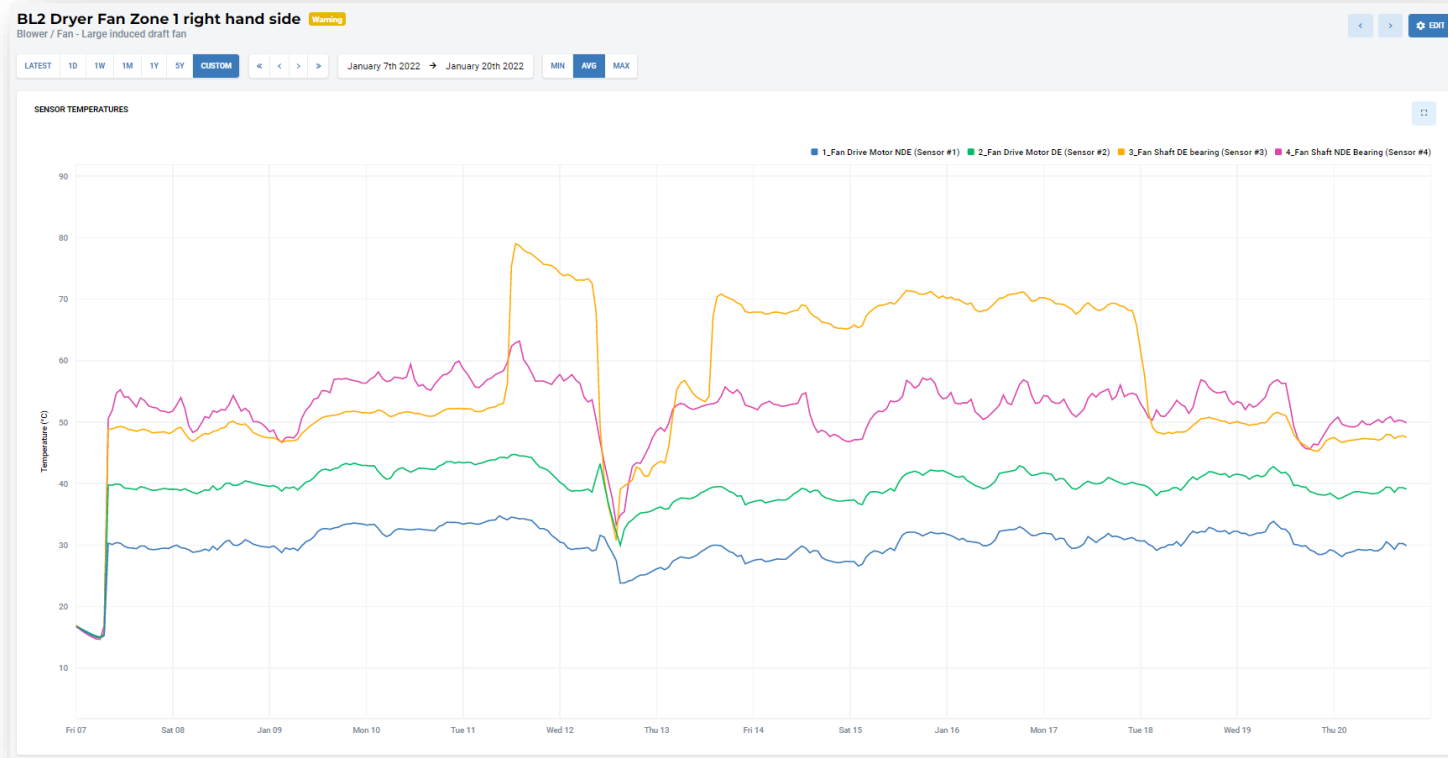
User event added

Spectrum/Waveform stored



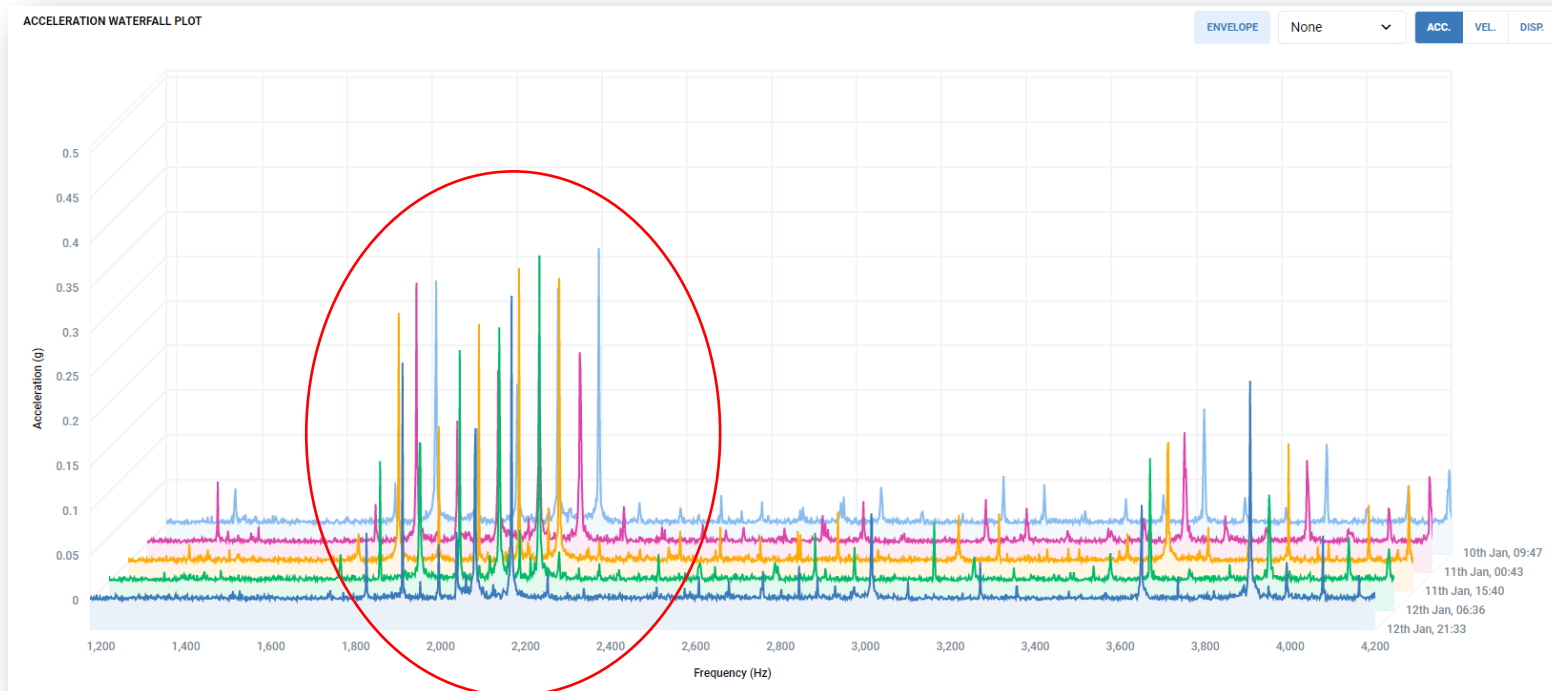
# Overall Timelines

## Sensor Temperature Long Time Trends



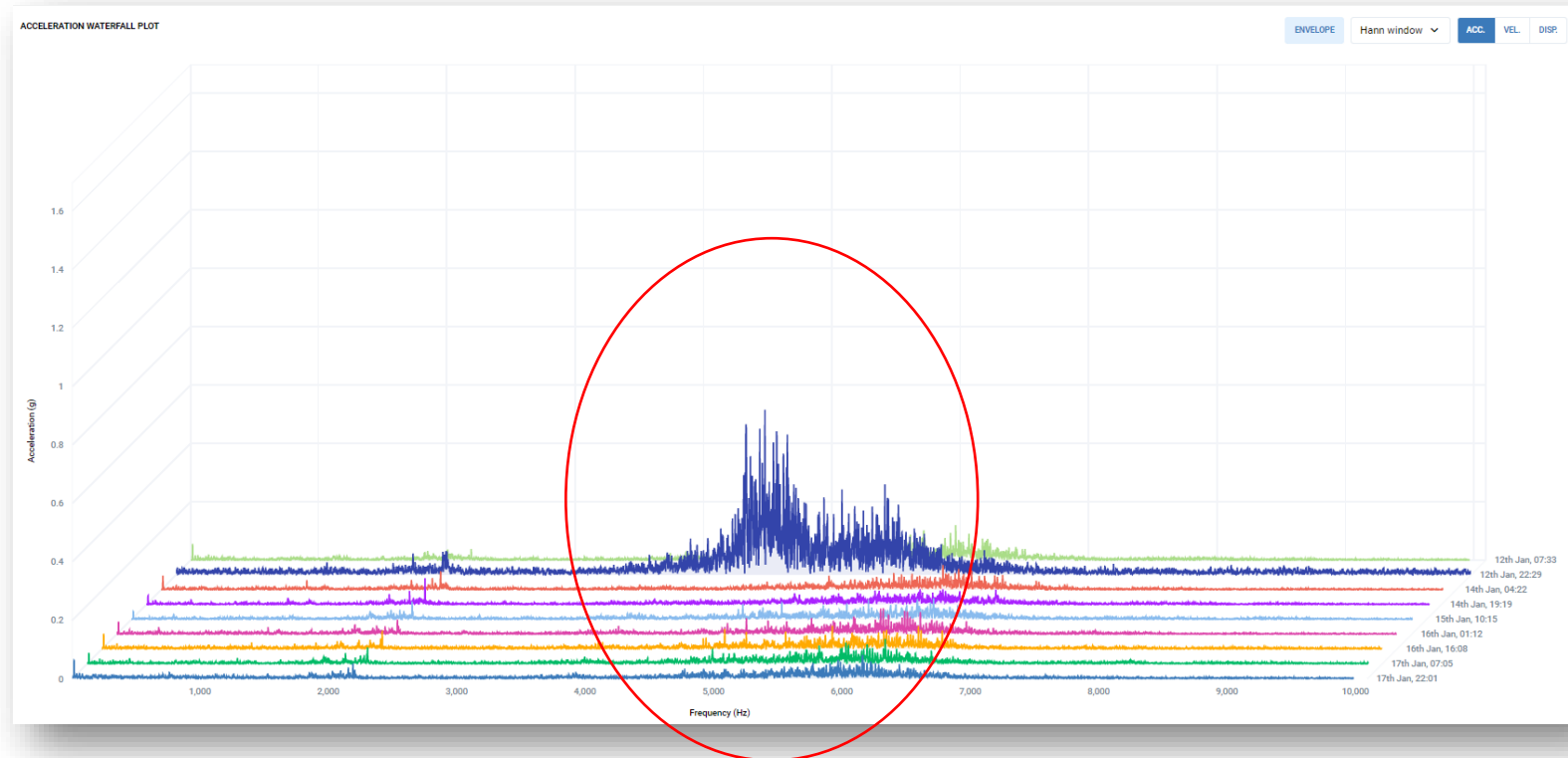
# Waterfall

Here we can have a waterfall highlighting the electrical activity on the motor due to the VFD.



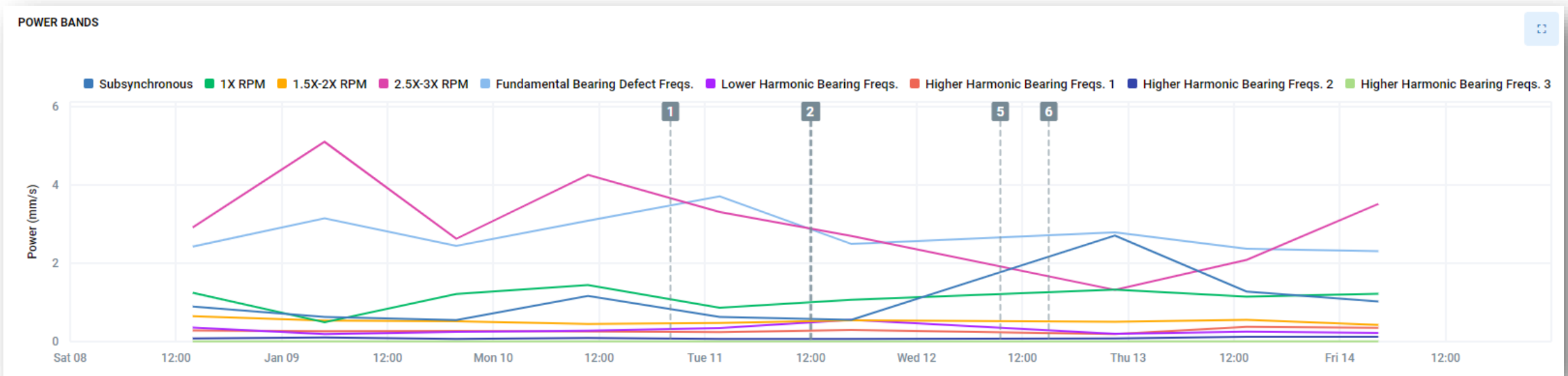
# Waterfall

Here we can have a waterfall highlighting the high friction then reduction after greasing



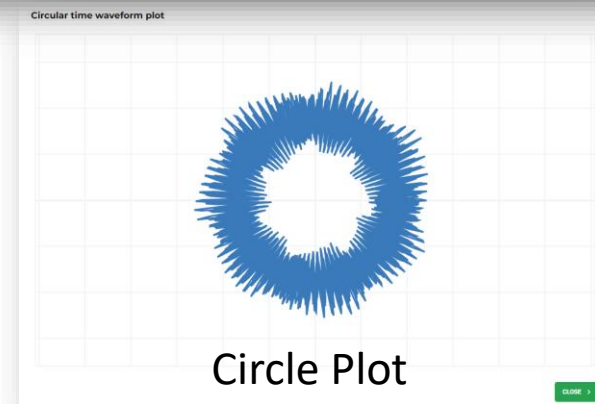
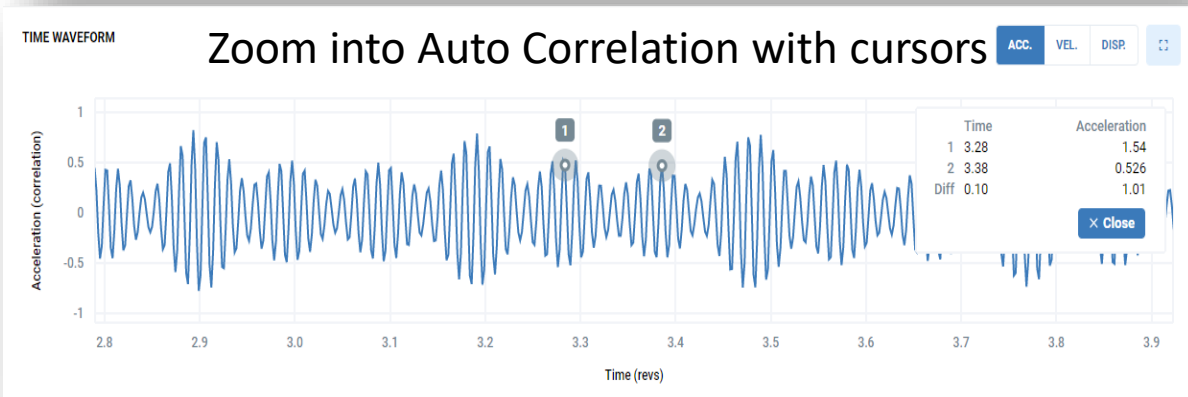
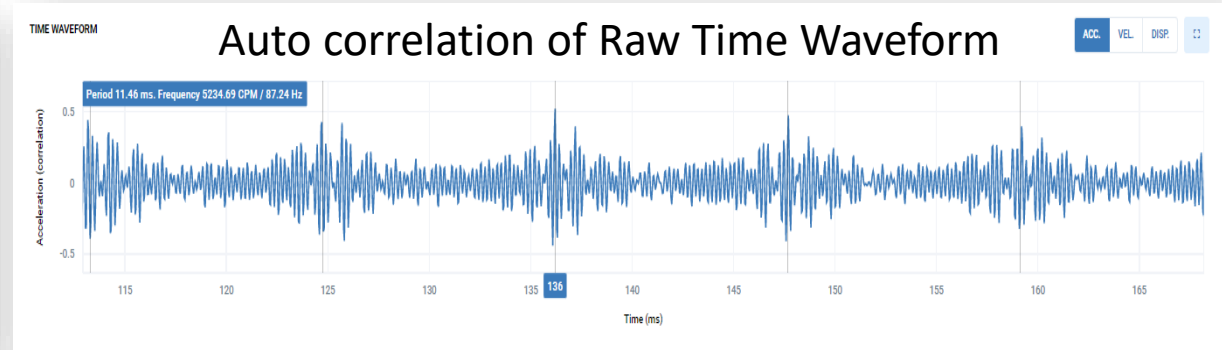
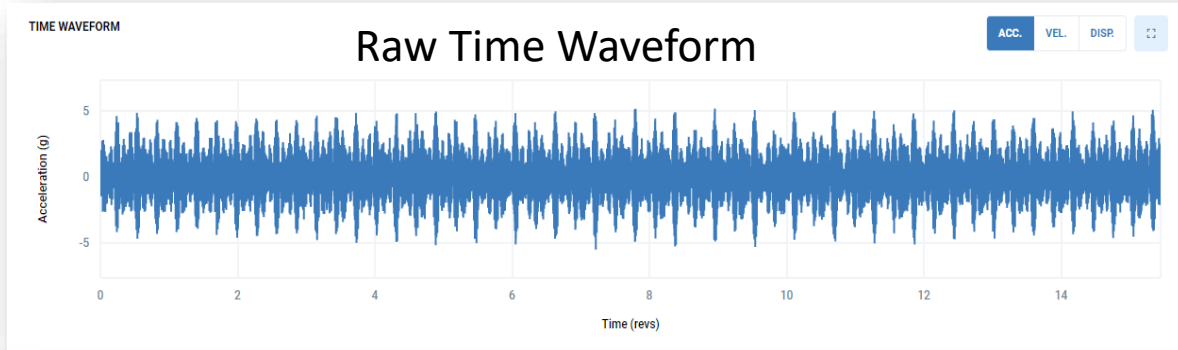
# Powerband Trends

For each Spectrum Saved where there will be a powerband trend over time



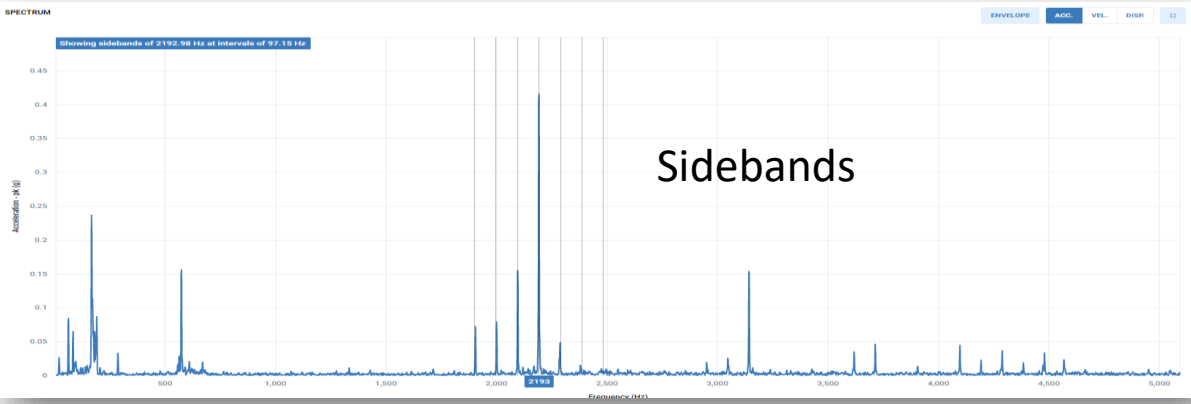
# Time Waveforms

For Analysis you can have the Raw Time Waveform, Autocorrelated time waveform, Zoom in to measure the period and also a circular plot of the data

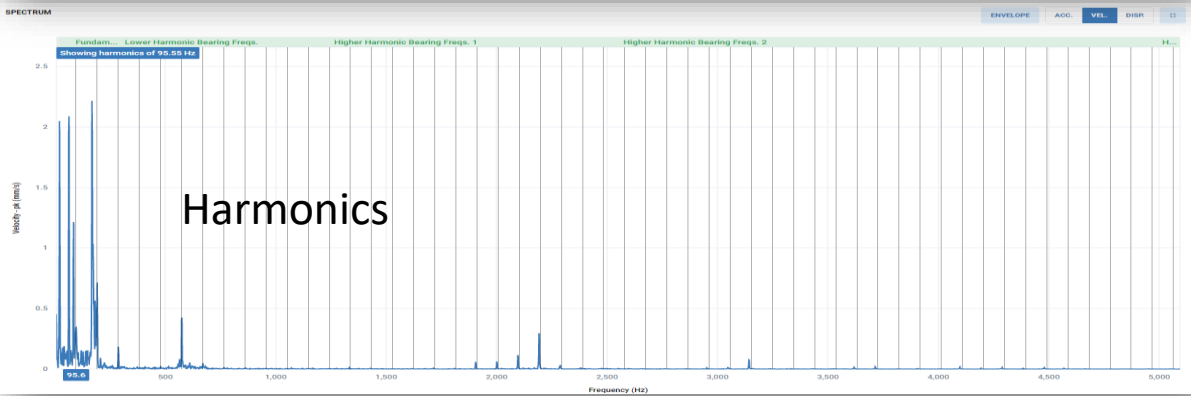


# Spectrum

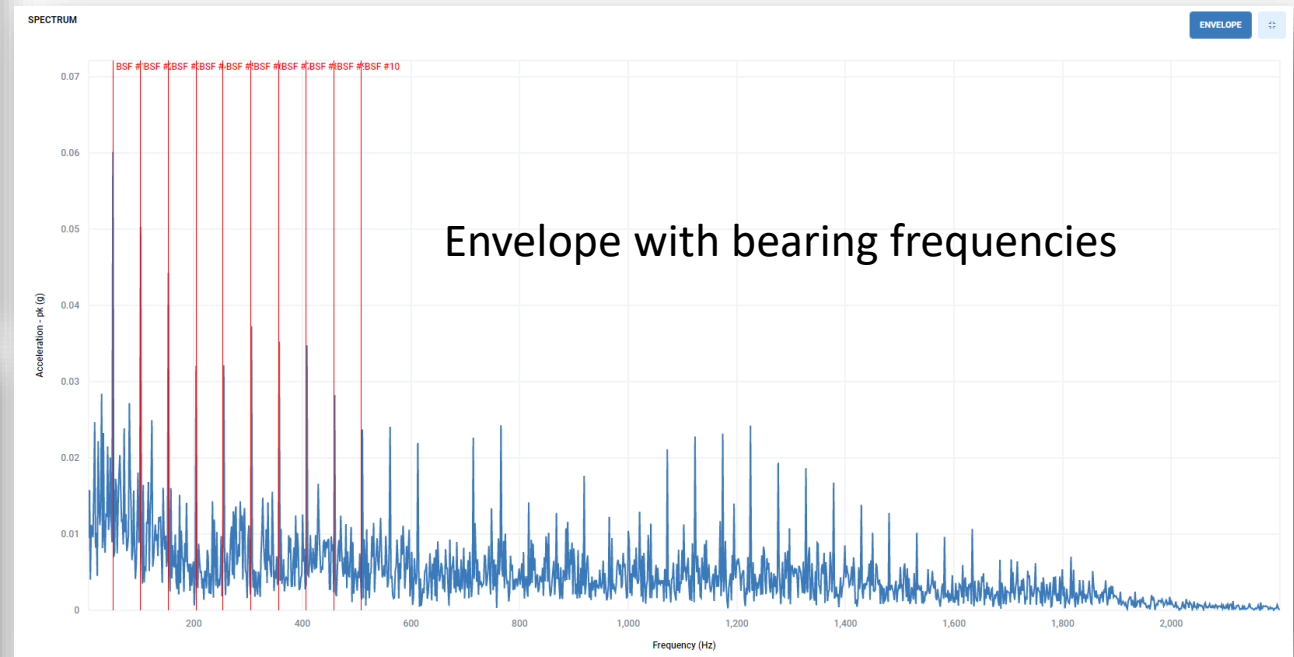
For analysis we have Acceleration, Velocity, Displacement and Envelope Spectrum choice. We can apply Harmonics, Sidebands and Bearing frequencies can be displayed.



Sidebands



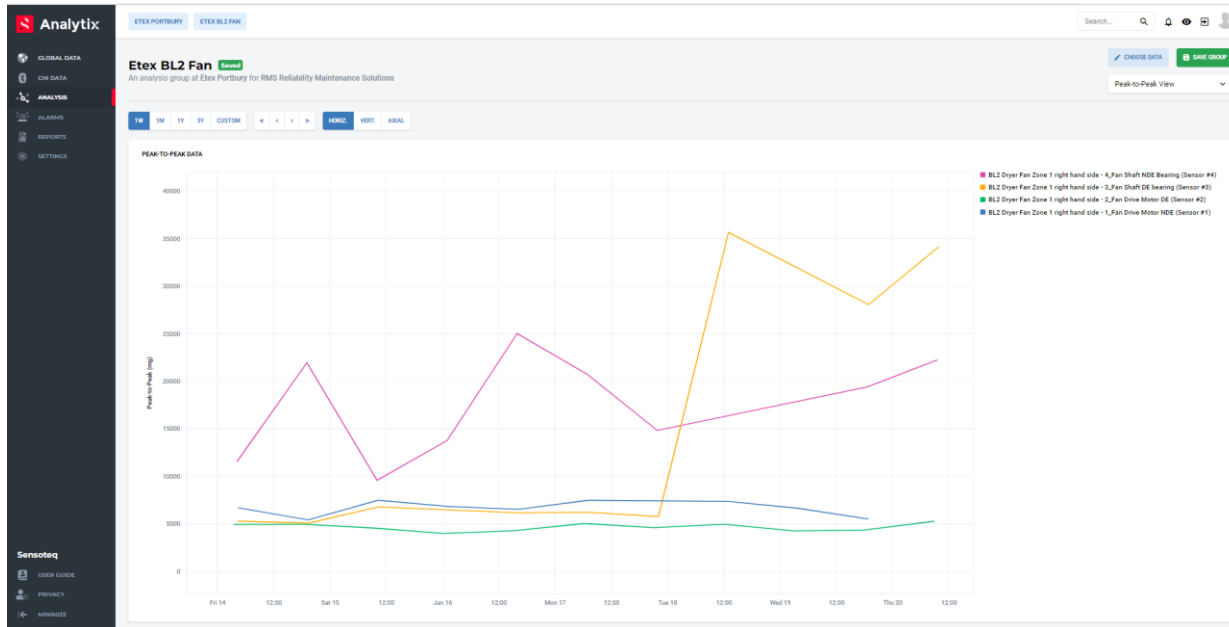
Harmonics



Envelope with bearing frequencies

# Analysis groups

User analysis groups can be created across various machines and points



# Reports

User adjustable reports can be created

Etex Portbury - Critical issue		
Machine	1W Alarms	Status
BL2 Dryer Fan Zone 1 right hand side	9	Critical issue
Elevator 11 Head Shaft	0	OK
Left Saw Motor	0	OK
Right Saw Motor	0	OK

On initial data set up a possible defect has been detected at the fan NDE bearing.

This is the fan DE bearing Pk-Pk Trend every 3 mins showing a steady 6-7 gs



BL2 Dryer Fan Zone 1 right hand side - 3\_Fan Shaft DE bearing (Sensor #3) - Peak-to-Peak

#	Name	Description	Date
1	James Sylvester	Initial Instal	Jan 7th 2022, 09:10

In comparisons this is the fan NDE bearing with an elevated level of 8gs and random peaks to 20gs



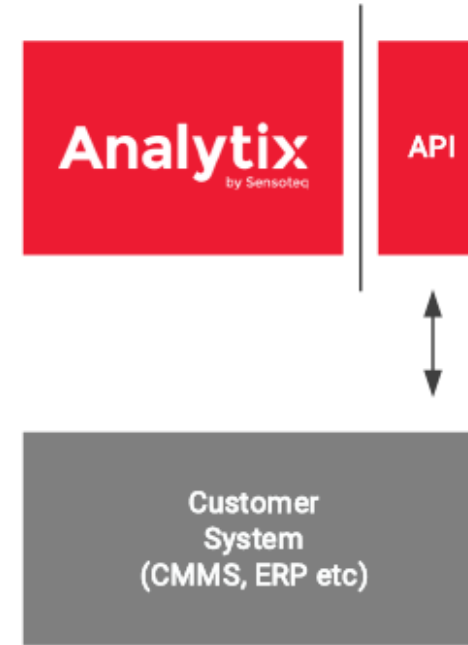
BL2 Dryer Fan Zone 1 right hand side - 4\_Fan Shaft NDE Bearing (Sensor #4) - Peak-to-Peak



# API

---

- The Analytix API allows any piece of data you can see on the platform to be accessed by any program via the API calls.
- API functions will require software/IT specialist knowledge to be used in a way that is required for your application.
- The data can be pulled to other online applications to be used for alarms, creating job alerts, data collection and can even be used in AI systems.
- Sensoteq require an NDA to be signed by both parties as the API contains proprietary information. Once signed, they will send the full API documentation which contains all available endpoints.
- To request access to the API using your account or even a new dedicated API account, contact Sensoteq for a quick discussion.



API Specification	
Physical	
Architecture	RESTful
Requests	HTTPS
Format	JSON
Authentication	JWT
Key Expiration	Never
Access Control	Via standard Analytix GUI
Key Generation	Single generation
The API is fully documented, and we can provide support if necessary.	

Technical management, created and Presented by



# JPS Reliability

A Reliable Plant is a Profitable Plant

With support from

