



# JPS Reliability

A Reliable Plant is a Profitable Plant

**PROfessional services for PROactive maintenance**

[info@jpsreliability.com](mailto:info@jpsreliability.com) <https://jpsreliability.com>





# SENSOTEQ KAPPA X TRIAL

- Technical management JPS Reliability Ltd
- **Kappa X Wireless Vibration Sensor Solution**




# Software comparisons

---

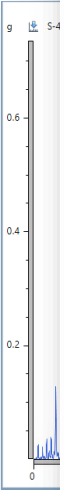
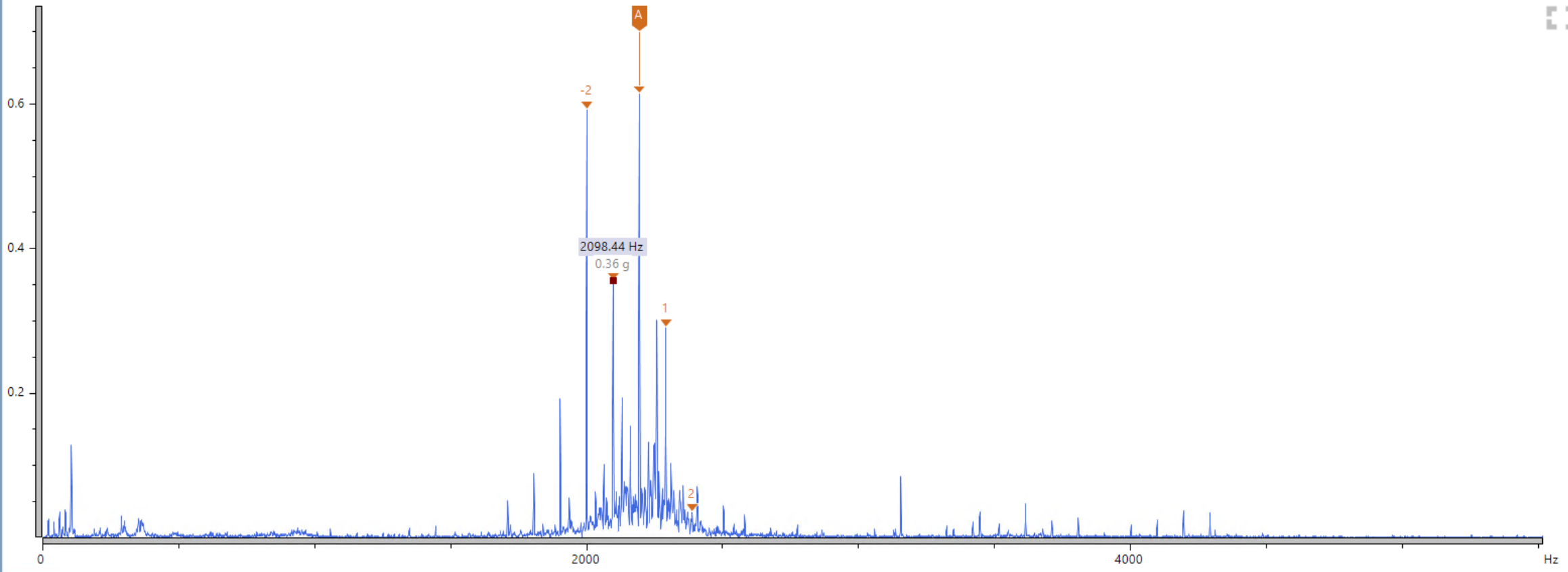
# Motor NDE Data Comparison

SPECTRUM

ENVELOPE ACC. VEL. DISP. 

Sidebands = 96.88 Hz 3.91 Orders A = 2195.31 Hz 88.58 Orders 0.613 g

g S-41-02-10-001 Point 1: V Accel (11/01/2022 12:04:43)



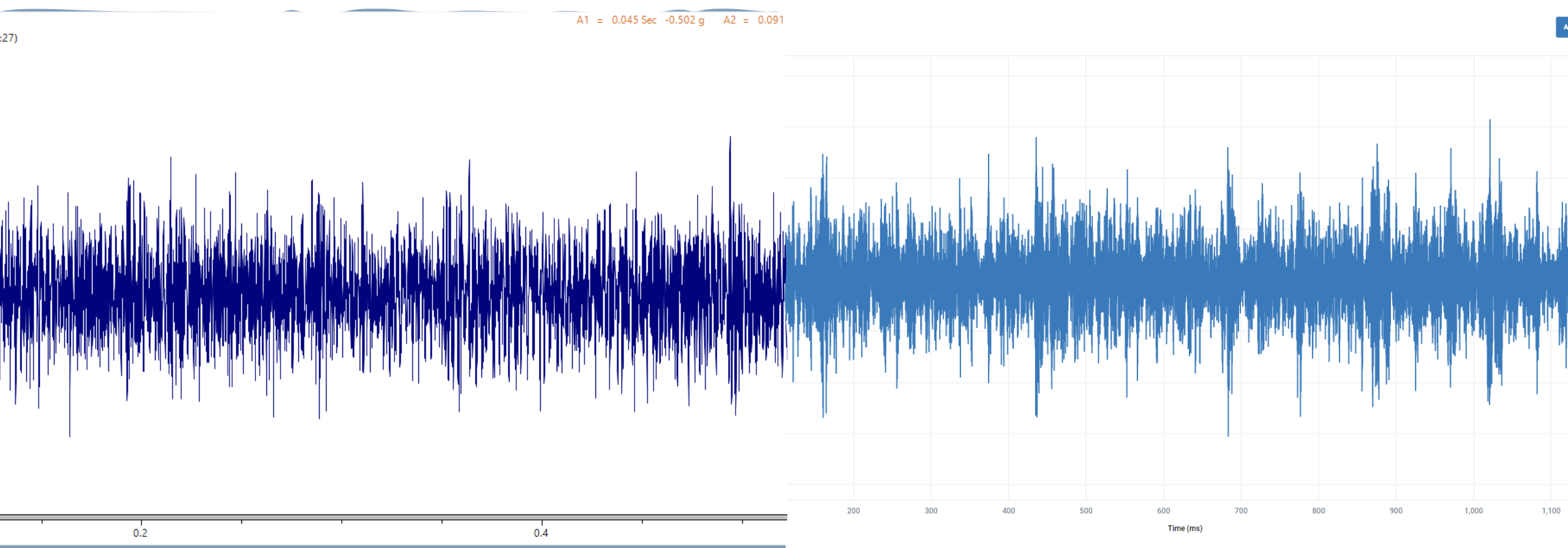
Frequency (Hz)

# Fan NDE Data Comparisons

Handheld 11/01/2022 11:45 Manual

Vs

Sensoteq 11/01/2022 16:21 Automatic



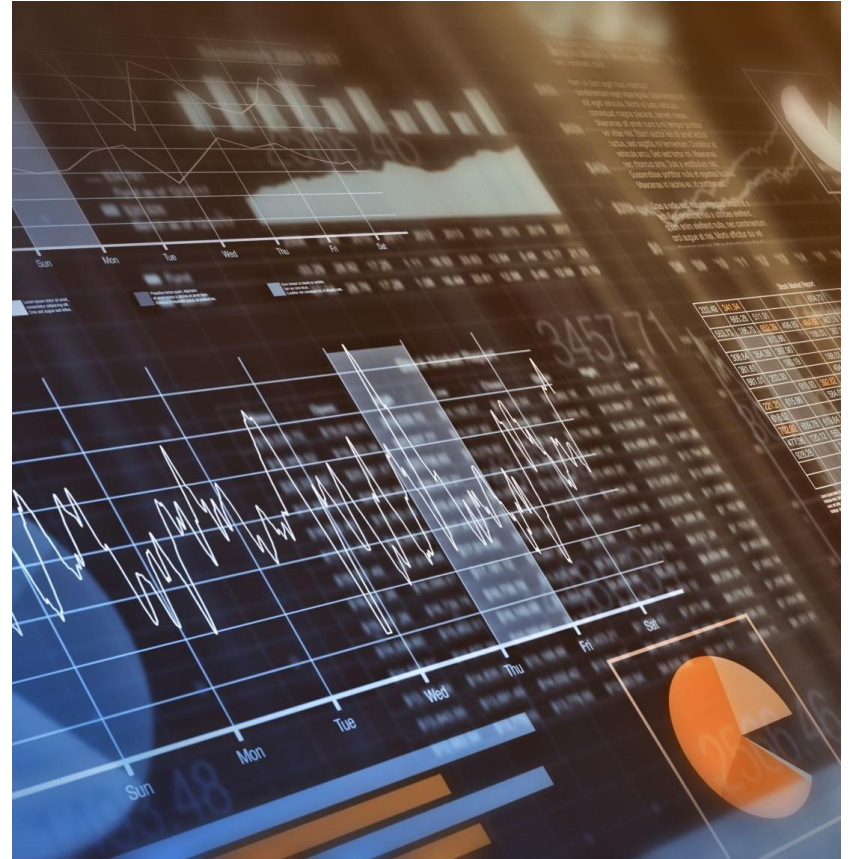


# Summary of Wireless trial

---

# Summary - Technology

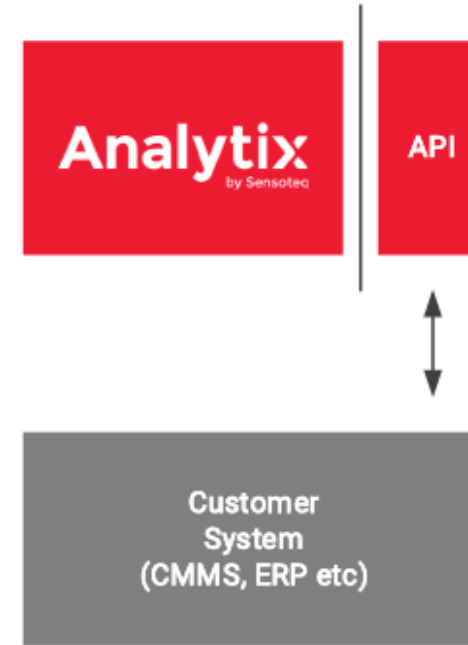
- No internal IT hassle or costs
- Moving from monthly data to 24/7 monitoring
- Automatic emails for alarms so 24/7 analytical monitoring
- Access to the data as long as you can get on the internet from anywhere at anytime
- Key vibration parameters every 1+ minutes and spectral and waveform data every day
- Temperature every 3 minutes – Ambient, sensor and delta temp
- More accurate temperature and vibration data as permanent sensors



# API

---

- The Analytix API allows any piece of data you can see on the platform to be accessed by any program via the API calls.
- API functions will require software/IT specialist knowledge to be used in a way that is required for your application.
- The data can be pulled to other online applications to be used for alarms, creating job alerts, data collection and can even be used in AI systems.
- Sensoteq require an NDA to be signed by both parties as the API contains proprietary information. Once signed, they will send the full API documentation which contains all available endpoints.
- To request access to the API using your account or even a new dedicated API account, contact Sensoteq for a quick discussion.



API Specification	
<b>Physical</b>	
Architecture	RESTful
Requests	HTTPS
Format	JSON
Authentication	JWT
Key Expiration	Never
Access Control	Via standard Analytix GUI
Key Generation	Single generation
The API is fully documented, and we can provide support if necessary.	

Technical management, created and Presented by



# JPS Reliability

A Reliable Plant is a Profitable Plant

With support from

