



# IRIS MA™

Real-Time Motion. Instant Clarity.

## FROM INVISIBLE VIBRATION TO UNDENIABLE EVIDENCE— SEE IT LIVE, SOLVE IT FAST.

The IRIS MA™ is the world's first industrial camera with Live Motion Amplification®, giving you the power to see, measure and solve your toughest problems on the spot. Designed to capture every detail of motion with speed, precision, and reliability, the IRIS MA™ transforms how teams perform vibration analysis by delivering real-time, high-speed data that reveals faults traditional sensors often miss.



### Why IRIS MA?

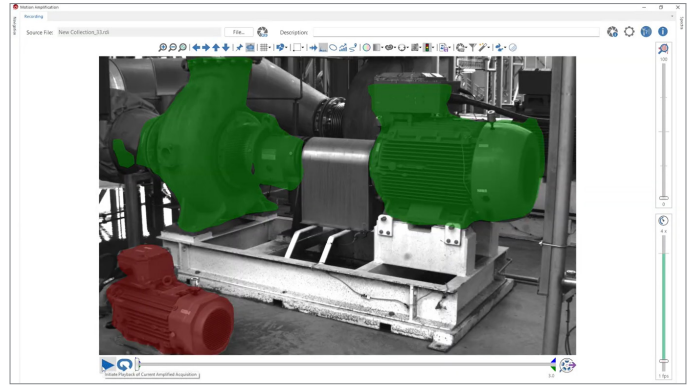
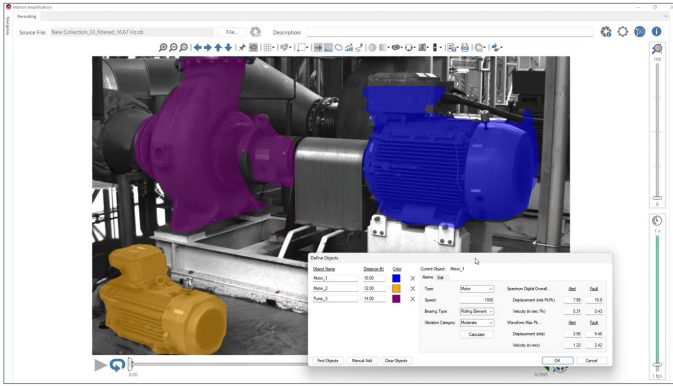
- **Clear, Intuitive Insights** – Accessible to every level of technician with no advanced training required.
- **Instant Analysis** – Onboard processing and 40 Gbps transfer keep workflows seamless.
- **Rugged & Reliable** – Built for tough industrial environments.
- **Faster Decisions** – Get precise data to diagnose issues immediately.
- **Future-Ready** – Advanced imaging integrates fully with TrueSight™ software.

### Seamless Integration with TrueSight™ Software

The IRIS MA™ camera powered by TrueSight™ software creates a complete diagnostic solution that combines high-speed imaging with AI-driven analysis for unmatched clarity and confidence.

- **Smarter Diagnostics** – TrueSight™ automatically detects assets and provides real-time health alerts, simplifying what used to be complex analysis.
- **Deeper Insights** – By combining visual motion data with accelerometer input, the system captures every fault, from misalignment to high-frequency bearing issues.
- **Streamlined Workflow** – Onboard processing and seamless software integration eliminate bottlenecks, moving you from capture to actionable results faster than ever.





TrueSight™ ID software simplifies workflow and saves time by automatically identifying objects of interest, allowing users to get started instantly. The severity alerts reduce diagnostic complexity and allow immediate, actionable insights with a simple green-yellow-red alert system, enabling technicians of any skill level to quickly address maintenance needs.

## FEATURES

### LIVE MOTION AMPLIFICATION®

Apply amplification before acquiring a recording. Scan assets instantly to see motion in real time.

### DATA EXPORT

Export waveform, spectra, orbits, and object paths to .csv file.

### TOP FREQUENCY FILTERING

Automatically determine frequencies of interest and create multiple filtered data sets with a single click.

### TRANSIENT PATH PLOT

Show the path of an object in the video as well as in the plot.

### TIME WAVEFORMS, SPECTRA, AND ORBITS

Unlimited number of regions can be drawn in the video to measure displacement. All measurements are simultaneous.

### FREQUENCY FILTERING

Bandpass, bandstop, lowpass, and highpass filtering of time waveform and video.

### SHAFT INSPECTION

Visually inspect rotating shafts and measure their displacement while under operation.

### VIDEO ANNOTATIONS

Add text, shape, annotations, and company logo overlays with export to video.

### STABILIZATION

Entire frame and region based image stabilization.

### MOTION MAPS

Show colored image overlays of individual frequencies or overall motion.

### TRANSIENT MOTION AMPLIFICATION®

See Motion Amplification® of small motions as an object moves through the scene.

### VIDEO SIDE-BY-SIDE

Side-by-side playback of original and Motion Amplification® video.

## SPECIFICATIONS

### LENSES

50mm f/0.95 Lens for Micro Four Thirds  
25mm f/0.95 Lens for Micro Four Thirds  
10.5mm f/0.95 Lens for Micro Four Thirds

### SAMPLE RATE

1,400 fps in HD, up to 29,000 fps at reduced resolution.

### FREQUENCY RANGE

Up to 5,400 CPM @ 180 fps Maximum: 39,000 CPM at 1,300 fps with reduced resolution.

#### with TrueSight HighSpeed:

Up to 42,000 CPM at 1,400 fps Maximum: 870,000 CPM at 29,000 fps with reduced resolution.

### MOTION AMPLIFICATION® FACTOR

1-500x

### MINIMUM DISPLACEMENT

<0.01 mils (0.25 µm) at 3.3 ft (1m) with 50mm lens,  
0.005 mils (0.125 µm) at close focus.

### PLAYBACK/EXPORT FEATURE

4x original framerate to 1 fps.

### THUNDERBOLT CABLE LENGTH

8.84 t (3m)

### OPTIONAL ACCESSORY KIT

LED light: 23,000 Lux @ 1 m, Li-ion light battery, light stand, extra vibration pads, computer stand.

### ACQUISITION SYSTEM

i7 processor, 32GB RAM, 1TB SSD, dual batteries, lightweight.